

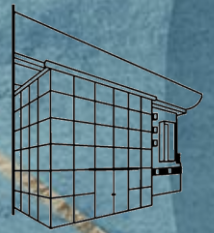


UNIVERSIDAD DE
GUADALAJARA
Red Universitaria e Institución Benemérita de Jalisco



COORDINACIÓN DE
SERVICIOS ACADÉMICOS
CENTRO UNIVERSITARIO DE CIENCIAS DE LA SALUD

CeDoSI
Centro de Documentación y
Sistemas de Información



Biblioteca digital

UDG

Una breve introducción a esta
herramienta

Dra. Flor de María Ruelas Cárdenas



Es la biblioteca digital de la Universidad de Guadalajara, inaugurada el 17 de agosto del 2006, ofrece recursos informativos en formato electrónico con los que cuenta nuestra Universidad. Cabe señalar que es la segunda biblioteca digital más grande del país.

En ella encontrarás :

- 52 bases de datos especializadas
- 28 bases de datos multidisciplinarias
- 41,100 revistas electrónicas
- 4'000,000 libros electrónicos
- 19,000 tesis
- herramientas antiplagio
- gestores de referencia
- catálogo electrónico de CEDOSI.

¿Cuál es la página de la biblioteca digital?

<https://wdg.biblio.udg.mx/>

Sólo debes identificarte como miembro de la comunidad universitaria con tu **código y NIP de SIAU**, al hacerlo garantizas tu acceso a la información dentro y fuera de las instalaciones universitarias.



Bienvenido

Este espacio ofrece a la comunidad de la Universidad de Guadalajara, acceso al acervo de recursos informativos digitales con que la institución cuenta. Suscripción a bases de datos de revistas científicas y libros, de editoriales con prestigio internacional. Producción universitaria disponible en el Repositorio Institucional, acceso al Fondo Histórico digitalizado y enlaces al Catálogo electrónico de las bibliotecas UdeG. Ingresando con su código y NIP de SIAU se garantiza el acceso a los documentos dentro y fuera de las instalaciones universitarias. Las herramientas de apoyo facilitan la localización de documentos y los servicios brindan la posibilidad de tener acompañamiento bibliotecario.



Twitter



Biblio Digital UdeG
@wdg_biblio



¡Nuevo recurso! Libros de la APA disponibles para la comunidad UdeG. Ingresar con tu código y NIP de SIAU a wdg.biblio.udg.mx



AMERICAN PSYCHOLOGICAL

Ver imagen en Twitter

Extensa colección de libros en psicología y áreas relacionadas, revisados por pares.

Consúltalo en tu Biblioteca Digital wdgBiblio #librosElectrónicos



29 ene. 2021



Biblio Digital UdeG
@wdg_biblio



La Biblioteca Digital de la Universidad de Guadalajara se une a la pena que embarga a nuestro director del Sistema Universitario de Bibliotecas, Dr. Sergio López Ruelas, por la sentida pérdida de su señor padre, deseando pronta resignación a su familia.

[Iniciar sesión](#)[Principal](#)[Recursos informativos](#)[Repositorio Institucional](#)[Catálogos en línea](#)[Herramientas](#)[Servicios bibliotecarios](#)

Ingrese con código y NIP de SIAU acceso para la comunidad universitaria y egresados.

Código / usuario

NIP / password

[Iniciar sesión](#)

Ingrese como invitado (algunas restricciones)

[Invitado](#)

Bienvenido

Este espacio ofrece a la comunidad de la Universidad de Guadalajara, acceso al acervo de recursos informativos digitales con que la institución cuenta. Suscripción a bases de datos de revistas científicas y libros, de editoriales con prestigio internacional. Producción universitaria disponible en el Repositorio Institucional, acceso al Fondo Histórico digitalizado y enlaces al Catálogo electrónico de las bibliotecas UdeG. Ingresando con su código y NIP de SIIAU se garantiza el acceso a los documentos dentro y fuera de las instalaciones universitarias. Las herramientas de apoyo facilitan la localización de documentos y los servicios brindan la posibilidad de tener acompañamiento bibliotecario.

Medidas de prevención por contagio de COVID-19

- Lavarse las manos constantemente
- Si es posible, quedarse en casa
- Cuidar salud física y mental
- Proteger a los adultos mayores
- Evitar saturar las redes de internet
- Desinfectar los objetos personales
- Evitar lugares concurridos y mantener la sana distancia
- Apoyo al comercio local

#QuédateEnCasa

RIUdeG
Repositorio Institucional de Información Académica de la Universidad de Guadalajara

wdg.Búsqueda
Herramientas que permiten realizar búsquedas en diversas bases de datos simultáneamente

Publica libros y TESIS

Micrositio COVID-19
Documentos científicos, recreativos y de apoyo a la educación virtual.

Twitter



Biblio Digital UdeG
@wdg_biblio

Externamos nuestras condolencias por la sentida pérdida del esposo de nuestra compañera Irma González, bibliotecaria de la preparatoria de Zapotlanejo.

La Biblioteca Digital wdgBiblio, perteneciente al Sistema Universitario de Bibliotecas, de la Universidad de Guadalajara se une a la pena por el fallecimiento del

Prof. Miguel Hernández de Alba
Académico de la Preparatoria de Zapotlanejo y esposo de nuestra compañera

Irma González Martínez
bibliotecaria de la Preparatoria de Zapotlanejo

Acasido el 12 de febrero del presente.

Extendemos nuestras condolencias a su familia, deseándoles pronta resignación ante esta irremediable pérdida. Descansen en paz.

Atentamente
"Firmas y Prácticas"
Guadalajara, Jalisco
Febrero de 2021



12 feb. 2021



Biblio Digital UdeG
@wdg_biblio

Principal

Recursos informativos

Repositorio Institucional

Catálogos en línea

Herramientas

Servicios bibliotecarios



Bienvenido

Este espacio ofrece a los usuarios de la Universidad de Guadalajara, acceso al acervo de recursos informativos digitales con que la institución cuenta, de prestigio internacional. Este espacio ofrece a los usuarios digitales con que la institución cuenta, de prestigio internacional. Este espacio ofrece a los usuarios digitalizado y enlaces que facilitan la localización y el acceso a los recursos de la biblioteca digitalizada y enlaces que facilitan la localización y el acceso a los recursos de la biblioteca.

- Especializadas
- Multidisciplinarias
- Revistas electrónicas
- Libros electrónicos
- Obras de consulta
- Recursos libres
- Bases de datos a prueba

Este espacio ofrece a los usuarios de la Universidad de Guadalajara, acceso al acervo de recursos informativos digitales con que la institución cuenta, de prestigio internacional. Este espacio ofrece a los usuarios digitales con que la institución cuenta, de prestigio internacional. Este espacio ofrece a los usuarios digitalizado y enlaces que facilitan la localización y el acceso a los recursos de la biblioteca digitalizada y enlaces que facilitan la localización y el acceso a los recursos de la biblioteca.

Repositorio Institucional de Información Académica de la Universidad de Guadalajara

Facilita el acceso virtual, libre y abierto al conocimiento académico y científico producido en la Universidad de Guadalajara para incrementar las posibilidades de satisfacer las necesidades informativas de nuestra comunidad, así como ampliar su visibilidad internacional, uso e impacto.

RIUdeG

Repositorio Institucional de Información Académica de la Universidad de Guadalajara

wdg.Búsqueda

Herramientas que permiten realizar búsquedas en diversas bases de datos simultáneamente



Micrositio COVID-19

Documentos científicos, recreativos y de apoyo a la educación virtual.

Twitter

Biblio Digital UdeG @wdg_biblio

Externamos nuestras condolencias por la sentida pérdida del esposo de nuestra compañera Irma González, bibliotecaria de la preparatoria de Zapotlanejo.

La Biblioteca Digital wdgBiblio, perteneciente al Sistema Universitario de Bibliotecas, de la Universidad de Guadalajara se une a la pena por el fallecimiento del

Prof. Miguel Hernández de Alba
Académico de la Preparatoria de Zapotlanejo y esposo de nuestra compañera

Irma González Martínez
bibliotecaria de la Preparatoria de Zapotlanejo

Accedió el 12 de febrero del presente.

Extendemos nuestras condolencias a su familia, deseándoles pronta resignación ante esta irreparable pérdida. Descansen en paz.

Atentamente:
"Firmas y Trabaja"
Bibliotecaria, Jalisco
Febrero de 2021

12 feb. 2021

Biblio Digital UdeG



TC ING GUÍA



ClinicalKey*

ClinicalKey

ClinicalKey es un recurso clínico dinámico, diseñado específicamente para satisfacer las necesidades de búsqueda de información de los médicos. Proporciona a los médicos de forma rápida, respuestas clínicamente relevantes de la enorme biblioteca de contenido médico y quirúrgico.



ClinicalKey*

ClinicalKey Student Enfermería

ClinicalKey Student Enfermería es una plataforma de formación interactiva que apoya a estudiantes y profesores con contenido enfermero, acceso a Libros que cubren 20 temáticas, desde la anatomía y fisiología, banco de imágenes de alta calidad y Colección de contenidos de Enfermería Obstétrico-Ginecológica.

**Para poder consultar los recursos de ClinicalKey Student Enfermería es necesario registrarse en la base de datos.*



ClinicalKey*

ClinicalKey Student Medicina

Plataforma de aprendizaje de medicina de nueva generación con acceso a libros, imágenes y videos en idioma español.

**Para acceder a los contenidos es necesario registrarse en la misma plataforma.*



Compendex Engineering Village

Base de datos especializada en las Ingenierías que cubre los abstracts de más de 18 millones de registros desde 1970 a la fecha (incluye tesaurus).



EBSCO



Dentistry & Oral Science Source (EbscoHost Web)

Dentistry & Oral Science Source abarca todas las facetas relacionadas con las áreas de odontología, entre ellas, salud pública dental, endodoncia, cirugía para el dolor facial, odontología, patología/cirugía/radiología maxilofacial y oral, ortodoncia, odontología



Search for conditions, procedures, drugs, and more




All Types  Search... 

[Saved Searches](#) [Search History](#)

[All Types](#)

[Books](#)

[Journals](#) [Monographs](#) [Guidelines](#) [Patient Education](#) [Clinical Overviews](#) [Multimedia](#) 

[Clinical Trials](#)

[Drug Monographs](#)

[Guidelines](#)




[Patient Education](#)

[Clinical Overviews](#)

[Multimedia](#)




Search for conditions, procedures, drugs, and more

Guidelines  DIABETES  

[Saved Searches](#) [Search History](#)

Browse

- [Books](#)
- [Journals](#)
- [Drug Monographs](#)
- [Guidelines](#)
- [Patient Education](#)
- [Clinical Overviews](#)
- [Multimedia](#)
- 



Filter By:

Clear all

Source Type

Journal Articles 33905

Full Text Only

Full Text and MEDLINE

Systematic Reviews 501

Meta-analyses 361

Randomized Control Trials 1269

Narrative Reviews 3592

Books 2549

Images 1912

Clinical Trials 754

554 results

Sort by: Relevance

[+] Rate Results

GUIDELINE

Diabetes in children and young people

National Institute for Health and Care Excellence (NICE). Published July 14, 2016.

FULL TEXT ARTICLE

Executive summary of the DAROC clinical practice guidelines for diabetes care- 2018

Article in Press: Corrected Proof

Journal of the Formosan Medical Association.

Diabetes Association of the Republic of China (Taiwan).. IAgRE. © 2019.

FULL TEXT ARTICLE

2018 AHA/ACC/AACVPR/AAPA/ABC/ACPM/ADA/AGS/APhA/ASPC/NLA/PCNA Guideline on the

Diabetes & Metabolism

Journal

View Journal Volumes



Current Issue

April 1, 2019

Was this helpful? Yes or No

Diabetes Mellitus

Disease Overview

View Full Topic

Ferri's Clinical Advisor 2019 · Ferri, Fred F., M.D., F.A.C.P.

Definition

• Diabetes mellitus (DM) refers to a syndrome of hyperglycemia resulting from many different causes (see



Find 'DIABETES' in this Page



Introduction

List of quality statements

Quality statement 1: Same-day referral and appointments

Quality statement 2: Education and information

Quality statement 3: Intensive insulin therapy and level 3 carbohydrate-counting education for type 1 diabetes

Quality statement 4: Continuous glucose monitoring in type 1 diabetes

GUIDELINE

Diabetes in children and young people (QS125)



National Institute for Health and Care Excellence (NICE)

Introduction

This quality standard covers the diagnosis and management of type 1 and type 2 diabetes in children and young people aged under 18. This quality standard will not cover care for children and young people with other forms of diabetes mellitus (such as monogenic diabetes or cystic fibrosis-related diabetes). Management of diabetes in women aged under 18 who are planning pregnancy or already pregnant is covered by the NICE guideline and quality standard on diabetes in pregnancy.

For more information see the diabetes in children and young people topic overview.

Why this quality standard is needed

NICE National Institute for Health and Care Excellence

© National Institute for Health and Care Excellence 2016. This content is made available by NICE (National Institute for Health and Care Excellence) but distributed by a third-party distributor. NICE takes no responsibility for the format in which this content is delivered. The distributor is responsible for incorporating updates from NICE and cannot alter NICE content in any way. Any information delivered alongside content provided by NICE will not necessarily reflect the views of either NICE or those organisations commissioned to develop NICE guidance. NICE content used outside

of t Español (México) oth Teclado Latinoamérica



Find 'DIABETES' in this [Page](#)



This Page

All Types

Books

Journals

Clinical Trials

Drug Monographs

Guidelines

Patient Education

Clinical Overviews

Multimedia

Procedure Videos

Clinical Focus

GUIDELINE

Diabetes in children and young people (QS125)

[National Institute for Health and Care Excellence \(NICE\)](#)

Introduction

This quality standard covers the diagnosis and management of type 1 and type 2 diabetes in children and young people aged under 18. This quality standard will not cover care for children and young people with other forms of diabetes mellitus (such as monogenic diabetes or cystic fibrosis-related diabetes). Management of diabetes in women aged under 18 who are planning pregnancy or already pregnant is covered by the [NICE guideline](#) and [quality standard](#) on diabetes in pregnancy.

For more information see the [diabetes in children and young people topic overview](#).

Why this quality standard is needed

NICE National Institute for Health and Care Excellence

© National Institute for Health and Care Excellence 2016. This content is made available by NICE (National Institute for Health and Care Excellence) but distributed by a third-party distributor. NICE takes no responsibility for the format in which this content is delivered. The distributor is responsible for incorporating updates from NICE and cannot alter NICE content in any way. Any information delivered alongside content provided by NICE will not necessarily reflect the views of either NICE or those organisations commissioned to develop NICE guidance. NICE content used outside of the UK is for personal use only. All other use of NICE content by



Filter By:

Clear all

Source Type

- Journal Articles 33905
- Full Text Only
- Full Text and MEDLINE
- Systematic Reviews 501
- Meta-analyses 361
- Randomized Control Trials 1269
- Narrative Reviews 3592
- Books 2549
- Images 1912
- Clinical Trials 754

28 results

Sort by: Relevance

[\[+\] Rate Results](#)

PATIENT EDUCATION

Diabetes

Available to print in [English & Spanish](#). American Academy of Family Physicians. Published November 22, 2016.

PATIENT EDUCATION

Diabetes Mellitus and Exercise

Available to print in [English & Spanish](#). Interactive Patient Education. Published June 27, 2018.

PATIENT EDUCATION

Diabetes Mellitus and Sick Day Management

Available to print in [English, Spanish & Polish](#). Interactive Patient Education. Published June 27, 2018.

Searches related to DIABETES

- [diabetes complications](#)
- [diabetes diagnostics](#)
- [diabetes drugs](#)
- [diabetes risk factors](#)
- [diabetes treatment](#)

Diabetes & Metabolism

Journal

[View Journal Volumes](#)



[Current Issue](#)

April 1, 2019

Was this helpful? [Yes](#) or [No](#)

Diabetes Mellitus

Disease Overview

[View Full Topic](#)

Ferri's Clinical Advisor 2019 · Ferri, Fred F., M.D., F.A.C.P.

Definition

- Diabetes mellitus (DM) refers to a syndrome of hyperglycemia resulting from many different causes (see [“Etiology”](#)). It is broadly classified into type 1 (T1DM) and type 2 DM (T2DM). The terms “insulin-dependent”



What is my activity plan?

What do I need to know about managing my diabetes?

PATIENT EDUCATION

Diabetes Mellitus and Exercise

Elsevier Interactive Patient Education © 2018 Elsevier Inc.

Last revised: June 27, 2018.



Exercising regularly is important for your overall health, especially when you have diabetes (*diabetes mellitus*). Exercising is not only about losing weight. It has many health benefits, such as increasing muscle strength and bone density and reducing body fat and stress. This leads to improved fitness, flexibility, and endurance, all of which result in better overall health.

Exercise has additional benefits for people with diabetes, including:

- Reducing appetite.

[Print](#)

Available to print in [English](#) & [Spanish](#).

ClinicalKey®





ClinicalKey®

¿No encuentra lo que está buscando? >

Buscar...



Sugerencia: utilice la función Contenido Guardado para acceder a los resultados de forma rápida más adelante.

< DIABETES

Diabetes in children and young people

National Institute for Health and Care Excellence (NICE)
Guías NICE • Publicado 13/07/2016

Author Correction: Public resources aid diabetes gene discovery.

Cousminer, Diana L; Grant, Struan F A
Nature genetics
Medline • Publicado 01/12/2018

Effects of n-3 Fatty Acid Supplements in Diabetes Mellitus.

ASCEND Study Collaborative Group; Bowman, Louise; Mafham, Marion; Wallendszus, Karl; Stevens, Will; Bu...
The New England journal of medicine
Medline • Publicado 18/10/2018

Effects of Aspirin for Primary Prevention in Persons with Diabetes Mellitus.

ASCEND Study Collaborative Group; Bowman, Louise; Mafham, Marion; Wallendszus, Karl; Stevens, Will; Bu...

Filtrar por: Ninguno Ordenador por: Relevancia

< Guías NICE



GUÍA CLÍNICA

Diabetes in children and young people (QS125)

National Institute for Health and Care Excellence (NICE)

Introduction

This quality standard covers the diagnosis and management of type 1 and type 2 diabetes in children and young people aged under 18. This quality standard will not cover care for children and young people with other forms of diabetes mellitus (such as monogenic diabetes or cystic fibrosis-related diabetes). Management of diabetes in women aged under 18 who are planning pregnancy or already pregnant is covered by the [NICE guideline](#) and [quality standard](#) on diabetes in pregnancy.

For more information see the [diabetes in](#)

Esquema

< Guías NICE

Guardar contenido

Compartir link

Imprimir

GUÍA CLÍNICA

Diabetes in children and young people (QS125)

National Institute for Health and Care Excellence (NICE)

Introduction

This quality standard covers the diagnosis and management of type 1 and type 2 diabetes in children and young people aged under 18. This quality standard will not cover care for children and young people with other forms of diabetes mellitus (such as monogenic diabetes or cystic fibrosis-related diabetes). Management of diabetes in women aged under 18 who are planning pregnancy or already pregnant is covered by the [NICE guideline](#) and [quality standard](#) on diabetes in pregnancy.

For more information see the [diabetes in](#)

Esquema

Fuente

Fuente

Principal

Recursos informativos

Repositorio Institucional

Catálogos en línea

Herramientas

Servicios bibliotecarios



Bienvenido

Este espacio ofrece a los usuarios de la Universidad de Guadalajara, acceso al acervo de recursos informativos digitales con que la institución cuenta, de prestigio internacional. Este espacio digitalizado y enlaces garantiza el acceso a los recursos y facilita la localización

- Especializadas
- Multidisciplinarias
- Revistas electrónicas
- Libros electrónicos
- Obras de consulta
- Recursos libres
- Bases de datos a prueba

Universidad de Guadalajara, acceso al acervo de recursos informativos a bases de datos de revistas científicas y libros, de editoriales con prestigio internacional. Este espacio digitalizado y enlaces garantiza el acceso a los recursos y facilita la localización de las instalaciones universitarias. Las herramientas de apoyo brindan la posibilidad de tener acompañamiento bibliotecario.

Repositorio Institucional de Información Académica de la Universidad de Guadalajara

Facilita el acceso virtual, libre y abierto al conocimiento académico y científico producido en la Universidad de Guadalajara para incrementar las posibilidades de satisfacer las necesidades informativas de nuestra comunidad, así como ampliar su visibilidad internacional, uso e impacto.

RIUdeG

Repositorio Institucional de Información Académica de la Universidad de Guadalajara

wdg.Búsqueda

Herramientas que permiten realizar búsquedas en diversas bases de datos simultáneamente

Publica libros y TESIS

Micrositio COVID-19

Documentos científicos, recreativos y de apoyo a la educación virtual.

Twitter

Biblio Digital UdeG @wdg_biblio

Externamos nuestras condolencias por la sentida pérdida del esposo de nuestra compañera Irma González, bibliotecaria de la preparatoria de Zapotlanejo.

La Biblioteca Digital wdgBiblio, perteneciente al Sistema Universitario de Bibliotecas, de la Universidad de Guadalajara se une a la pena por el fallecimiento del

Prof. Miguel Hernández de Alba
Académico de la Preparatoria de Zapotlanejo y esposo de nuestra compañera

Irma González Martínez
bibliotecaria de la Preparatoria de Zapotlanejo

Accedió el 12 de febrero del presente.

Extendemos nuestras condolencias a su familia, deseándoles pronta resignación ante esta irreparable pérdida. Descansen en paz.

Atentamente:
"Firmas y Trabaja"
Bibliotecaria, Jalisco
Febrero de 2021

12 feb. 2021

Biblio Digital UdeG



TC ESP



Ulrichsweb

Ulrichsweb es una fuente de información detallada, y fácil de usar, sobre más de 300 000 publicaciones periódicas (también denominadas publicaciones en serie) de todo tipo: publicaciones académicas y de investigación, revistas electrónicas, títulos revisados por pares, revistas de gran popularidad, periódicos, boletines informativos, etc.

✓ TC ESP



Up To Date

UpToDate, recurso de conocimientos médicos en el centro de atención al paciente. La información contenida en UpToDate está basada en evidencia y se actualiza de forma continua; UpToDate presenta una síntesis exhaustiva de evidencia seguida de recomendaciones que se pueden llevar a cabo en el centro de atención al paciente. Combina una plataforma de publicación avanzada con el rigor de un proceso editorial sofisticado gestionado por un grupo de autores y editores médicos de prestigiosas facultades de medicina de todo el mundo.

✓ TC ING



v|lex

Base de datos con información jurídica mundial.

✓ TC ESP



Visible Body Heart & Circulatory Premium

Visible Body Heart & Circulatory Premium es una base de datos con módulos del cuerpo humano interactivo del sistema circulatorio.

✓ TC ING



Visible Body Human Anatomy Atlas

Visible Body Human Anatomy Atlas es una base de datos con módulos del cuerpo humano interactivo atlas de anatomía humana.





View By Specialty

List Alphabetically

Search Calculators

ALLERGY AND IMMUNOLOGY CALCULATORS

Clinical Criteria

[Temperature unit conversions](#)

[Weight unit conversions](#)

Medical Equations

[Absolute eosinophil count](#)

[Conventional \(gravimetric, imperial, US\) unit to SI unit conversions: Chemistry and endocrine tests](#)

[Conventional \(gravimetric, imperial, US\) unit to SI unit conversions: Immunology lab values](#)

Calculator: Body mass index (BMI; Quetelet's index) in adults

$$\text{BMI} = (\text{Weight}/2.205) / (\text{Height}/39.37)^2$$

Input:

Height	<input type="text"/>	in ▾
Weight	<input type="text"/>	lb ▾

Result:

BMI kg/m²Decimal precision ▾

BMI interpretation

BMI <18.5:Below normal weight
BMI ≥18.5 and <25:Normal weight
BMI ≥25 and <30:Overweight
BMI ≥30 and <35:Class I Obesity
BMI ≥35 and <40:Class II Obesity
BMI ≥40:Class III Obesity

Calculator: APACHE II scoring system in adults

Input:

Rectal temperature

MAP

HR

RR

A-a gradient or PaO₂pH or HCO₃

Na

K

Creatinine

Hematocrit

WBC

Glasgow

Result:

Apache score score ▾

Buscar en UpToDate



Lexicomp® Drug Interactions

Add items to your list by searching below.

TRAMADOL

ITEM LIST

Clear List

Analyze

– [TraMADol](#)

Display complete list of interactions for an individual item by clicking item name. Add another item to analyze for potential interactions.

NOTE: This tool does not address chemical compatibility related to I.V. drug preparation or administration.

X Avoid combination	C Monitor therapy	A No known interaction
D Consider therapy modification	B No action needed	<i>More about Risk Ratings</i> ▼

123 Results

[Print](#)

X	TraMADol (CNS Depressants) Azelastine (Nasal)
X	TraMADol (CNS Depressants) Bromperidol
X	TraMADol CarBAMazepine
X	TraMADol (Serotonin Modulators) Dapoxetine
X	TraMADol (Opioid Agonists) Eluxadoline
X	TraMADol Iobenguane Radiopharmaceutical Products
X	TraMADol (Serotonin Modulators) Methylene Blue

Mostrando resultados para **DIABETES**

Todos los temas

Adultos

Pediatria

Pacientes

Gráficos

Colapsar resultados

diabetes significa *diabetes mellitus*. Haga clic en el término alternativo [diabetes insipidus](#)

Overview of medical care in adults with diabetes mellitus

... factors, history of ~~diabetes-related complications~~, hypoglycemic episodes, ~~diabetic~~ ketoacidosis (DKA) frequency (type 1 diabetes only), and current management. Although the more diabetes-specific microvascular ...

[Pharmacologic therapy for type 2 diabetes](#)

[Diabetes medications](#)

[Summary and recommendations](#)

[Insulin titration \(Algorithms\)](#)

[Monitoring in diabetes mellitus \(Tables\)](#)

Sodium-glucose co-transporter 2 inhibitors for the treatment of hyperglycemia in type 2 diabetes mellitus

... considered as initial therapy for the majority of patients with type 2 diabetes. Initial therapy in most patients with type 2 diabetes should begin with diet, weight reduction, exercise, and metformin (in ...

[Diabetic ketoacidosis](#)

[Summary and recommendations](#)

Pancreas-kidney transplantation in diabetes mellitus: Surgical considerations and immunosuppression

... patients with diabetes who undergo SPK transplantation may have difficulty either achieving or tolerating therapeutic doses of

Topic Outline

SUMMARY & RECOMMENDATIONS

INTRODUCTION

EVALUATION

Initial

Diabetes-related complications

- Routine eye examination
 - Diabetic retinopathy
 - Visual impairment
- Routine foot examination
- Screening for increased urinary albumin excretion
- Screening for coronary heart disease

Comorbid conditions

GLYCEMIC CONTROL

Overview of medical care in adults with diabetes mellitus

Author: [David K McCulloch, MD](#)

Section Editor: [David M Nathan, MD](#)

Deputy Editor: [Jean E Mulder, MD](#)

[Contributor Disclosures](#)

All topics are updated as new evidence becomes available and our [peer review process](#) is complete.

Literature review current through: **Apr 2019**. | This topic last updated: **Mar 21, 2019**.

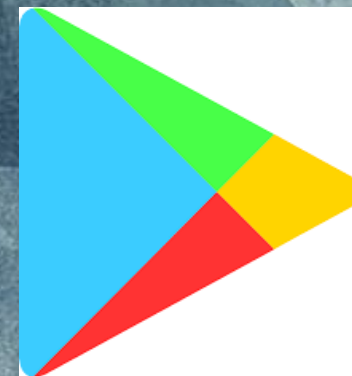
INTRODUCTION

The estimated overall prevalence of diabetes among adults in the United States ranges from 5.8 to 12.9 percent (median 8.4 percent) [1,2]. More personal health care resources are estimated to be spent on diabetes than any other condition [3]. Numerous factors, in addition to directly related medical complications, contribute to the impact of diabetes on quality of life and economics. Diabetes is associated with a high prevalence of depression [4] and adversely impacts employment, absenteeism, and work productivity [5].

This review will provide an overview of the medical care for patients with diabetes ([table 1](#)). The management approach is consistent with guidelines from the American Diabetes Association (ADA) for health maintenance in patients with diabetes, which

Ahora puede marcar contenidos como favoritos para acceder a ellos fácilmente más adelante.

UpToDate®



ACEPTAR



Buscar en UpToDate

Buscar en UpToDate

Buscar en U

Favoritos e historial

Favoritos e historial

- Home
- Contenidos
- Calculadoras
- Drug Interactions
- Favoritos e historial
- CME / MOC
- Configuración
- Contenido sin conexión
- Help
- Enviar su opinión sobre la aplicación
- Cerrar sesión



... of medical care in adults with diabetes melli...

Outline

ARY & RECOMMENDATIONS

DUCTION

ATION

tes-related complications

utine eye examination

diabetic retinopathy

visual impairment

utine foot examination

eenening for increased urinary albumin excretion

eenening for coronary heart disease

rbid conditions

MIC CONTROL

orina and target A1C

Flor de María Ruelas Cárdenas
Créditos CME: 1.0



Hecho



Hecho



Hecho



Continuing Medical Education (CME)

Maintenance of Certification (MOC)

MOC Boards



Wolters Kluwer

Date completed that

COLEGIO DE MEDICINA INTERNA DE MÉXICO, A. C.

Mar 29, 2019 - Mar 29, 2019

and is awarded

0.5 AMA PRA Category 1 Credit(s)™

Denise Brown

ble

IM):

name

COMEGO (MR)

/ YYYY

Add board and continue



Bases de Datos Multidisciplinarias

Plataformas con funciones de búsqueda y localización de contenidos en diversas áreas del conocimiento, a texto completo o referenciales.

Filtrar por letra:

A B C D E F G H I J K L M N O P Q R S T U V W X Y Z

Filtrar por: - Área del conocimiento - - Especialidad - - Idioma - - Tipo - **Quitar filtros**



EbscoHost Web

Conjunto de 16 bases de datos con más de 7,000 artículos de revistas y periódicos sobre medicina, ciencia, educación, agricultura, economía, biología, negocios, administración entre otras disciplinas.



Contacto

Tel: (01 33) 31 34 22 77
Ext. 11959

Sistema Universitario de Bibliotecas
Av. Hidalgo N° 935

Ubicación





Searching: **Applied Science & Technology Source Ultimate**, Show all | Choose Databases

Search



Search Options ▾ Basic Search Advanced Search Search History



Searching: Applied Science & Technology Source Ultimate, Show all | Choose Databases

hip fracture

Search

Basic Search Advanced Search Search History

Refine Results

Current Search

Boolean/Phrase:

hip fracture

Expanders

Apply equivalent subjects

Limit To

- Full Text
- References Available
- Scholarly (Peer Reviewed) Journals

From: 1944 To: 2021 Publication Date



Show More Options set

Source Types

- All Results
- Academic Journals (2,593)
- Journals (2,550)
- Magazines (278)
- Conference Materials (161)

Search Results: 1 - 10 of 3,226

Relevance Page Options Share

1. Pain Management with Early Regional Anesthesia in Geriatric Hip Fracture Patients.



By: Garlich, John M.; Pujari, Amit; Moak, Zachary; Debbi, Eytan; Yalamanchili, Raj; Stephenson, Sam; Stephan, Stephen; Polakof, Landon; Little, Milton; Moon, Charles; Anand, Kapil; Lin, Carol A. Journal of the American Geriatrics Society. Sep2020, Vol. 68 Issue 9, p2043-2050. 8p. DOI: 10.1111/jgs.16547. , Database: SocINDEX with Full Text

Subjects: Older patients; Elder care; Pain management; Old age; California; Hip joint fractures; Bupivacaine; Subgroup analysis (Experimental design); Conduction anesthesia; Bone fractures; Hip joint injuries; Longitudinal method; Early medical intervention

2. The Association Between Orthogeriatric Co-Management and Mortality Following Hip Fracture.



By: Rapp, Kilian; Becker, Clemens; Todd, Chris; Rothenbacher, Dietrich; Schulz, Claudia; König, Hans-Helmut; Liener, Ulrich; Hartwig, Erich; Büchele, Gisela. Deutsches Aerzteblatt International. 1/24/2020, Vol. 117 Issue 4, p53-59. 14p. 1 Chart. , Database: SocINDEX with Full Text

Subjects: Mortality; Older patients; Germany; Hip joint fractures; Health insurance claims; Hospital patients

PDF Full Text (1.8MB)

3. Association of CHA₂DS₂-VASc Score with Stroke, Thromboembolism, and Death in Hip Fracture Patients.



By: Hjelholt, Thomas J.; Johnsen, Søren P.; Brynningsen, Peter K.; Pedersen, Alma B. Journal of the American Geriatrics Society. Aug2020, Vol. 68 Issue 8, p1698-1705. 8p. 2 Charts, 1 Graph. DOI: 10.1111/jgs.16452. , Database: SocINDEX with Full Text

Subjects: Older patients; Stroke; Causes of death; Hospitals; Denmark; Hip joint fractures; Thromboembolism risk factors; Hip surgery; Mortality risk factors; Congestive heart failure; Hypertension in old age; Age factors in disease; Diabetes in old age; Transient ischemic attack; Vascular diseases; Stroke – Risk factors; Atrial fibrillation; Confidence intervals; Bone fractures; Hip joint injuries; Longitudinal method; Risk assessment; Disease incidence; Odds ratio

4. Comparing Longitudinal Sarcopenia Trends by Definitions Across Men and Women After Hip Fracture.

Related Images



Find More



Searching: Applied Science & Technology Source Ultimate, Show all | Choose Databases

hip fracture Search

Basic Search Advanced Search Search History

Search Results: 1 - 6 of 6

Relevance Page Options Share

Refine Results

Current Search

Boolean/Phrase:

hip fracture

Expanders

Apply equivalent subjects

Limiters

Full Text

Published Date: 20140101-20211231

Language

spanish

Limit To

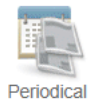
- Full Text
References Available
Scholarly (Peer Reviewed) Journals

From: 2014 To: 2021 Publication Date

Show More Options set

Database

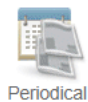
1. Prevalencia de sarcopenia y características de los sarcopénicos en pacientes mayores de 80 años ingresados por fractura de cadera.



Prevalence of sarcopenia and characteristics of sarcopenic subjects in patients over 80 years with hip fracture. By: Sánchez-Castellano, Carmen; Martín-Aragón, Sagrario; Vaquero-Pinto, Nieves; Bermejo-Bescós, Paloma; Merello de Miguel, Ana; Cruz-Jentoft, Alfonso José. Nutricion Hospitalaria. May/Jun2020, Vol. 37 Issue 3, p813-818. 6p. Language: Spanish. DOI: 10.20960/nh.02607. , Database: Food Science Source

PDF Full Text (257KB)

2. Prevalencia de sarcopenia y características de los sarcopénicos en pacientes mayores de 80 años ingresados por fractura de cadera.



[Prevalence of sarcopenia and characteristics of sarcopenic subjects in patients over 80 years with hip fracture]. By: Sánchez-Castellano, Carmen; Martín-Aragón, Sagrario; Vaquero-Pinto, Nieves; Bermejo-Bescós, Paloma; Merello de Miguel, Ana; José Cruz-Jentoft, Alfonso; Cruz-Jentoft, Alfonso-José. Nutricion Hospitalaria. 2019, Vol. 36 Issue 4, p813-818. 6p. Language: Spanish. DOI: 10.20960/nh.02607. , Database: Food Science Source

PDF Full Text (257KB)

3. VITAMINA D Y SU RELACIÓN CON LA UBICACIÓN ANATÓMICA DE LA FRACTURA DE CADERA EN ADULTOS MAYORES CHILENOS HOSPITALIZADOS.



[VITAMIN D AND ITS RELATION WITH THE ANATOMICAL LOCATION OF HIP FRACTURE IN CHILEAN OLDER ADULTS HOSPITALIZED]. By: Dinamarca Montecinos, José Luis; Vásquez Leiva, Alejandra; Durán Agüero, Samuel; Rubio Herrera, Ramona; Dinamarca Montecinos, Jose Luis. Nutricion Hospitalaria. dec2015, Vol. 32 Issue 6, p2777-3782. 6p. Language: Spanish. DOI: 10.3305/nh.2015.32.6.9795. , Database: Food Science Source

Subjects: VITAMIN D metabolism; BONE fractures; HIP joint injuries; HOSPITAL care; VITAMIN D; VITAMIN D deficiency; CROSS-sectional method; CHILE

PDF Full Text (281KB)

4. Ingesta de proteína, lípidos séricos y fuerza muscular en ancianos.

Related Images



Find More



Searching: Applied Science & Technology Source Ultimate, Show all | Choose Databases

hip fracture TX All Text Search

AND woman Select a Field (optional) Clear ?

AND cancer Select a Field (optional) + -

Basic Search Advanced Search Search History

Result List Refine Search 1 of 5

Citation Format

NOTE: Review the instructions at [EBSCO Connect](#) and make any necessary corrections before using. Pay special attention to personal names, capitalization, and dates. Always consult your library resources for the exact formatting and punctuation guidelines.

MLA Works Cited
 (Modern Language Assoc.) Passarelli, Michael N., et al. "Risk of Keratinocyte Carcinomas with Vitamin D and Calcium Supplementation: A Secondary Analysis of a Randomized Clinical Trial." *American Journal of Clinical Nutrition*, vol. 112, no. 6, Dec. 2020, pp. 1532–1539. *EBSCOhost*, doi:10.1093/ajcn/nqaa267.

Vancouver/ICMJE References
 Passarelli MN, Karagas MR, Mott LA, Rees JR, Barry EL, Baron JA. Risk of keratinocyte carcinomas with vitamin D and calcium supplementation: a secondary analysis of a randomized clinical trial. *American Journal of Clinical Nutrition* [Internet]. 2020 Dec [cited 2021 Feb 18];112(6):1532–9. Available from: <https://search.ebscohost.com/login.aspx?direct=true&db=fsr&AN=147531377&site=ehost-live>

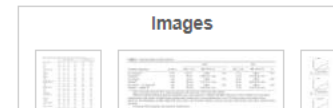
Export to Bibliographic Management Software (EndNote, ProCite, Reference Manager, RefWorks, BibTeX, etc.) »

Risk of keratinocyte carcinomas with vitamin D and calcium supplementation: a secondary analysis of a randomized clinical trial.

Authors: [Passarelli, Michael N¹](#) michael.n.passarelli@dartmouth.edu
[Karagas, Margaret R¹](#)
[Mott, Leila A¹](#)
[Rees, Judy R¹](#)

Tools

- Google Drive
- Add to folder
- Print
- E-mail
- Save
- Cite
- Export
- Create Note
- Permalink
- Listen
- Translate



[Principal](#)[Recursos informativos](#)[Repositorio Institucional](#)[Catálogos en línea](#)[Herramientas](#)[Servicios bibliotecarios](#)

Bases de Datos Multidisciplinarias

Plataformas con funciones de búsqueda y localización de contenidos en diversas áreas del conocimiento, a texto completo o referenciales.

Filtrar por letra:

A B C D E F G H I J K L M N O P Q R S T U V W X Y Z

Filtrar por:

- Área del conocimiento -

- Especialidad -

- Idioma -

- Tipo -

Quitar filtros



Web of Science

Web of Science es un sistema integrado basado en la web que ofrece plataforma de contenido de alta calidad y las herramientas para acceder, analizar y gestionar información de la investigación: Science Citation Index Expanded (SCI-EXPANDED), Social Sciences Citation Index (SSCI), Arts & Humanities Citation Index (A&HCI), Derwent, Book Citation Index- Science (BKCI-S), Book Citation Index- Social Sciences & Humanities (BKCI-SSH), Emerging Sources Citation Index (ESCI).



Wiley



Colección multidisciplinaria, con mas de 1,370 títulos, con artículos a texto completo en ciencias de la vida, salud, ciencias físicas,

Discover multidisciplinary content

from the world's most trusted global citation database.

Search in: **Web of Science Core Collection** ▾ Editions: **All** ▾

DOCUMENTS

AUTHORS

CITED REFERENCES

Title ▾

COVID

×

+ Add row

+ Add date range

Advanced Search

× Clear

Search

Search > Results

139,030 results from Web of Science Core Collection for:

Q COVID (Title)

Analyze Results

Citation Report

Create Alert

Copy query link

Publications

You may also like...

Refine results

Search within results for...



Quick Filters

- Highly Cited Papers 4,969
- Hot Papers 833
- Review Articles 11,952
- Early Access 9,191
- Open Access 110,758

Publication Years

- 2022 120
- 2021 74,415
- 2020 64,482
- 2019 12
- 2018 1

0/139,030

Add To Marked List

Export

Relevance



1

of 2,000



- 1 **Defining Post-COVID Symptoms (Post-Acute COVID, Long COVID, Persistent Post-COVID): An Integrative Classification**

[Fernandez-de-las-Penas, C; Palacios-Cena, D; \(...\); Florencio, LL](#)Mar 2021 | [INTERNATIONAL JOURNAL OF ENVIRONMENTAL RESEARCH AND PUBLIC HEALTH](#) 18 (5)

Enriched Cited References

The pandemic of the coronavirus disease 2019 (COVID-19) has provoked a second pandemic, the "long-haulers", i.e., individuals presenting with post-COVID symptoms. We propose that to determine the presence of post-COVID symptoms, symptoms should appear after the diagnosis of SARS-CoV-2 infection; however, this situation has some problems due to ... [Show more](#)

[Free Full Text from Publisher](#) ...

14

Citations

38

References

[Related records](#)

- 2 **Long COVID and chronic COVID syndromes**

[Halpin, S; O'Connor, R and Sivan, M](#)Mar 2021 | Oct 2020 (Early Access) | [JOURNAL OF MEDICAL VIROLOGY](#) 93 (3) , pp.1242-1243

14

Citations

6

References

[Related records](#)

Refine results



Quick Filters

- Highly Cited Papers 4,969
- Hot Papers 833
- Review Articles 11,952
- Early Access 9,191
- Open Access 110,758

[Exclude](#)
[Refine](#)

Publication Years

- 2022 120
- 2021 74,415
- 2020 64,482
- 2019 12
- 2018 1

[Exclude](#)
[Refine](#)

Document Types

- Articles 76,966
- Editorial Materials 18,914
- Letters 18,393
- Review Articles 11,952
- Early Access 9,191

[See all](#)
[Exclude](#)
[Refine](#)
 0/139,030

[Add To Marked List](#)
[Export](#)

Relevance



1 of 2,000



- 1 **Defining Post-COVID Symptoms (Post-Acute COVID, Long COVID, Persistent Post-COVID): An Integrative Classification**

[Fernandez-de-las-Penas, C](#); [Palacios-Cena, D](#); (...); [Flores, LL](#)

Mar 2021 | [INTERNATIONAL JOURNAL OF ENVIRONMENTAL RESEARCH AND PUBLIC HEALTH](#) 18 (5)

[Enriched Cited References](#)

The pandemic of the coronavirus disease 2019 (COVID-19) has provoked a second pandemic, the "long-haulers", i.e., individuals presenting with post-COVID symptoms. We propose that to determine the presence of post-COVID symptoms, symptoms should appear after the diagnosis of SARS-CoV-2 infection; however, this situation has some problems due to ... [Show more](#)

[Free Full Text from Publisher](#)
14

Citations

38

References

[Related records](#)

- 2 **Long COVID and chronic COVID syndromes**

[Halpin, S](#); [O'Connor, R](#) and [Sivan, M](#)

Mar 2021 | Oct 2020 (Early Access) | [JOURNAL OF MEDICAL VIROLOGY](#) 93 (3) , pp.1242-1243

[Free Full Text From Publisher](#)
14

Citations

6

References

[Related records](#)

- 3 **S1 Guideline Post-COVID/Long-COVID**

[Koczulla, AR](#); [Ankermann, T](#); (...); [Zwick, RH](#)

Sep 2021 (Early Access) | [PNEUMOLOGIE](#)

The German Society of Pneumology initiated the AWMFS1 guideline Post-COVID/ Long-COVID. In a broad interdisciplinary approach, this S1 guideline was designed based on the current state of knowledge.

The clinical recommendation describes current post-COVID/long-COVID symptoms, diagnostic appro: ... [Show more](#)

[Full Text at Publisher](#)
193

References

[Related records](#)

[Search](#) > [Results](#) > Results

46,110 results from Web of Science Core Collection for:

Q COVID (Title)

Analyze Results

Citation Report

Create Alert

Refined By: Publication Years: 2021 X Document Types: Articles X [Clear all](#)[Copy query link](#)

Publications

You may also like...

Refine results

Search within results for...



Quick Filters

- Highly Cited Papers 1,118
- Hot Papers 203
- Early Access 6,498
- Open Access 38,039

Publication Years ▾

- 2021 46,110

Document Types ▾

 0/46,110

Add To Marked List

Export ▾

Relevance ▾



1 of 923



- 1 **Defining Post-COVID Symptoms (Post-Acute COVID, Long COVID, Persistent Post-COVID): An Integrative Classification**

[Fernandez-de-las-Penas, C; Palacios-Cena, D; \(...\); Florencio, LL](#)Mar 2021 | [INTERNATIONAL JOURNAL OF ENVIRONMENTAL RESEARCH AND PUBLIC HEALTH](#) 18 (5)

Enriched Cited References

The pandemic of the coronavirus disease 2019 (COVID-19) has provoked a second pandemic, the "long-haulers", i.e., individuals presenting with post-COVID symptoms. We propose that to determine the presence of post-COVID symptoms, symptoms should appear after the diagnosis of SARS-CoV-2 infection; however, this situation has some problems due to ... [Show more](#)

[Free Full Text from Publisher](#) ***14
Citations38
References[Related records](#)

- 2 **S1 Guideline Post-COVID/Long-COVID**
- [Koczulla, AR; Ankermann, T; \(...\); Zwick, RH](#)
Sep 2021 (Early Access) | [PNEUMOLOGIE](#)

The German Society of Pneumology initiated the AWMFS1 guideline Post-COVID/ Long-COVID. In a broad interdisciplinary approach, this S1 guideline was designed based on the current state of knowledge.

193
References

Search > Results > Results

46,110 results from Web of Science Core Collection for:

COVID (Title)

Analyze Results

Citation Report

Create Alert

Refined By: Publication Years: 2021 Document Types: Articles Clear all

Copy query link

Publications

You may also like...

Refine results

Search within results for...

Quick Filters

- Highly Cited Papers 1,118
- Hot Papers 203
- Early Access 6,498
- Open Access 38,039

Publication Years

- 2021 46,110

Document Types

0/46,110

Add To Marked List

Export

1 Defining Post-COVID Symptoms (Post-Acute COVID, Long COVID, Persistent Post-COVID)

Integrative Classification

Fernandez-de-las-Penas, C; Palacios-Cena, D; (...); Florencio, LL

Mar 2021 | INTERNATIONAL JOURNAL OF ENVIRONMENTAL RESEARCH AND PUBLIC HEALTH 18 (5)

Enriched Cited References

The pandemic of the coronavirus disease 2019 (COVID-19) has provoked a second pandemic, the "long-haul" presenting with post-COVID symptoms. We propose that to determine the presence of post-COVID symptoms appear after the diagnosis of SARS-CoV-2 infection; however, this situation has some problems due to ...

Free Full Text from Publisher

2 S1 Guideline Post-COVID/Long-COVID

Koczulla, AR; Ankermann, T; (...); Zwick, RH

Sep 2021 (Early Access) | PNEUMOLOGIE

The German Society of Pneumology initiated the AWMFS1 guideline Post-COVID/ Long-COVID. In a broad interdisciplinary approach, this S1 guideline was designed based on the current state of knowledge.

- Relevance
- Date: newest first
- Date: oldest first
- Citations: highest first
- Citations: lowest first
- Usage (all time): most first
- Usage (last 180 days): most first
- Recently added
- Conference title: A to Z
- Conference title: Z to A

193 References

Search > Results > Results > Results

46,110 results from Web of Science Core Collection for:

Q COVID (Title)

Analyze Results

Citation Report

Create Alert

Refined By: Publication Years: 2021 X Document Types: Articles X Clear all

Copy query link

Publications

You may also like...

Refine results

Search within results for...



Quick Filters

- Highly Cited Papers 1,118
- Hot Papers 203
- Early Access 6,498
- Open Access 38,039

Publication Years

- 2021 46,110

Document Types

 0/46,110

Add To Marked List

Export

Citations: highest first



1 of 923

 1 Dexamethasone in Hospitalized Patients with Covid-19

Horby, P; Lim, WS; (...); Landray, MJ

Feb 25 2021 | NEW ENGLAND JOURNAL OF MEDICINE 384 (8) , pp.693-704



BACKGROUND

Coronavirus disease 2019 (Covid-19) is associated with diffuse lung damage. Glucocorticoids may modulate inflammation-mediated lung injury and thereby reduce progression to respiratory failure and death. ... [Show more](#)

[Free Full Text From Publisher](#) ...

2,844

Citations

40

References

[Related records](#) 2 Repurposed Antiviral Drugs for Covid-19-Interim WHO Solidarity Trial Results

WHO Solidarity Trial Consortium

Feb 11 2021 | NEW ENGLAND JOURNAL OF MEDICINE 384 (6) , pp.497-511



Enriched Cited References

The authors report interim results of the WHO Solidarity trial of four repurposed antiviral drugs - remdesivir, hydroxychloroquine, lopinavir, and interferon beta-1a - in patients hospitalized with Covid-19. Effects on overall mortality, initiation of ventilation, and duration of hospital stay are compared. ... [Show more](#)

590

Citations

23

References

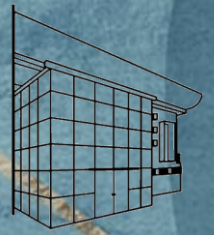


UNIVERSIDAD DE
GUADALAJARA
Red Universitaria e Institución Benemérita de Jalisco



COORDINACIÓN DE
SERVICIOS ACADÉMICOS
CENTRO UNIVERSITARIO DE CIENCIAS DE LA SALUD

CeDoSI
Centro de Documentación y
Sistemas de Información



Biblioteca digital

UDG

Una breve introducción a esta
herramienta